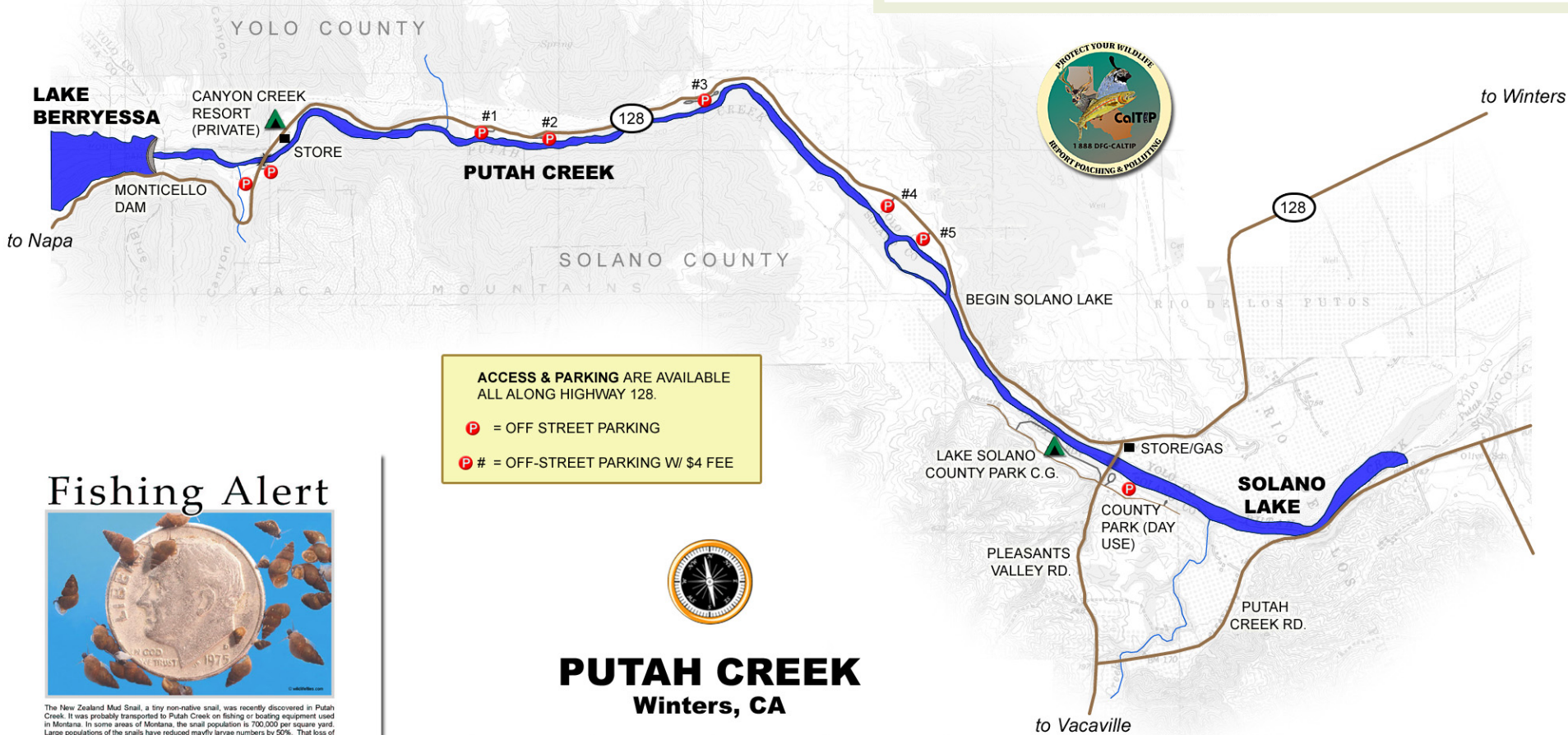


Current Regulations:
 Year round; Monticello dam to Lake Solano
 Barbless, artificial lures/flyes only
 Catch and release ONLY



ACCESS & PARKING ARE AVAILABLE
 ALL ALONG HIGHWAY 128.
 P = OFF STREET PARKING
 P # = OFF-STREET PARKING W/ \$4 FEE



PUTAH CREEK Winters, CA



*FOR REFERENCE ONLY. NOT RESPONSIBLE FOR ACCURACY, ROAD OR RIVER CLOSURES,
 WEATHER CONDITIONS, FLOWS OR ANY OTHER FACTORS THAT MAY AFFECT TRAVEL OR
 FISHING CONDITIONS.

Fishing Alert



The New Zealand Mud Snail, a tiny non-native snail, was recently discovered in Putah Creek. It was probably transported to Putah Creek on fishing or boating equipment used in Montana. In some areas of Montana, the snail population is 700,000 per square yard. Large populations of the snails have reduced mayfly larvae numbers by 50%. That loss of food is expected to eventually have a dramatic impact on trout populations.

Please help protect California trout populations by preventing the spread of this harmful snail to other waterways.

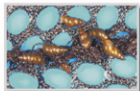
1. Wash your boots off completely before leaving the creek.
2. Inspect your boots, nets, and other equipment for snails.
3. Check under the laces and in the tongue folds of your boots.
4. Soak your boots and nets in hot tap water (130° F) until it cools.
5. Allow your boots to dry completely.
6. Check boats, kayaks, and canoes for snails.

EVEN BETTER

Use one pair of boots just for Putah Creek and clean as above.



Look under your boot soles for snails.



Shake your net to dislodge snails.

For additional information, links, and answers to your questions go to:



The New Zealand Mud Snail...
 Destroying a stream near you.

